

# Scoil Mhuire Howth Primary School

## January 2020 Newsletter



### Child Protection

As you know our school Child Protection Safeguarding Statement and information notices with regard to the Child Protection Designated Liaison Person (John Chambers) and the Child Protection Deputy Liaison Person (Aisling Heerey) are displayed on the school reception area (adjacent to the office of the School Secretary) and have been posted on the school's website—[www.howthprimaryschool.ie](http://www.howthprimaryschool.ie). A copy of the Child Safeguarding Statement has been provided to all school personnel, our Parents Association and to the school's Patron. Copies (hard or soft) are also available on request. The Child Safeguarding Statement is reviewed every year. We hope to conduct this year's review of the Child Protection Safeguarding Statement before Easter. Pupils, School Staff, parents and members of the school's Board of Management are invited to contribute suggestions as part of the review. Copies of the current Child Protection Safeguarding Statement are on the schools website—[www.howthprimaryschool.ie](http://www.howthprimaryschool.ie) or on request at the school office.

DLP and DDLP have undertaken Child Protection training as have school personnel/Parents' Association. New staff and/or others who may not yet have completed CP training are regularly encouraged to do so.

#### Board of Management:

Our school's Board of Management (BOM) is aware of its responsibility to provide information to all school personnel relevant to Child Protection and to ensure that available training is undertaken by members of school staff. The Board is also aware of its responsibility in relation to vetting of school personnel. Child Protection is on the agenda of every Board of Management meeting and every staff meeting. The principal/DLP provides a Child Protection Oversight Report to each meeting of the Board – this report is minuted as per requirements in **Child Protection Procedures for Primary and Post Primary Schools 21017**

#### Teachers and Pupils:

Teachers include Stay Safe/Social, Personal & Health Education (SPHE) plus Relationship and Sexuality Education (RSE) modules in their planning and are made aware of their responsibilities as Mandated Persons. Teachers also communicate with the children in class to discuss Child Protection areas such as safety/bullying/attendance etc. The school has conducted a pupil survey. Responses from this survey indicate a very high awareness of these areas and an affirmation by the great majority of children that their school is considered to be a safe environment.

### Great finish to 2019

Orchestra Open Days, Class Plays, Santa's Visit, decoration of the Christmas Tree in the school, setting up of our school cribs, a brilliant Nativity Pageant in the Church on Christmas Eve what a blizzard of fantastic seasonal occasions. I would like to thank all who helped to make these events so successful and so enjoyable



#### Inside this issue:

Primary Language Curriculum	2
Voluntary Contribution	2
Extreme Weather	3
Enrolment	4
Ranbows	4
School Events	5
calendar	6

# Primary Language Curriculum



Our teaching staff attended a P.L.C. Training in Drumcondra earlier this month. The Department of Education and Skills is introducing a new Primary Language Curriculum (PLC) for implementation in primary schools. Over the past three years, teachers have been engaging with PLC in Junior Infants to Second Classes. An updated language curriculum for all classes in primary schools (Junior Infants to Sixth) has now been introduced, setting out a programme of language learning for English and for Irish. PLC is aligned with the Junior Cycle Eng-

lish/Irish/ Modern Foreign Language programmes in Post Primary Schools. This provides for continuity of experience and progression in language learning as children make the transition from primary to post primary education. PLC also provides progression for children with special educational needs. All schools will be given a range of supports commencing in September 2019. The following supports will take place during the 2019-2020 school year.

Full day training seminar. Our school was allocated Monday 6th

January 2020  
as its training day

An Annual leadership workshop for school principals. For our school this took place on Friday 3rd December 2019

Two half days webinar workshops for teaching staff (Dates to be announced)

Further details regarding the Primary Language Curriculum are available from Department of Education and Skills and from the National Council for Curriculum and Assessment

## Voluntary Contribution

This is a crucial time for school finance. Although the school year started in late August, primary schools receive no money from Department of Education & Skills (DES) to pay for the day to day expenditure until the end of January 2019. DES grants only cover 40% of our budget so we are very much dependent on your support. Please be as generous as you can be—Contribution of €250 for one child, €350 for two or more children. This option allows the school to avail of tax relief. Regular School Contribution—€150 per child or €250 for two or more chil-

dren. In the latter case tax relief is also allowed. Pay what you can (once-off basis, or by direct debit). If you are not in a position to pay the regular contribution, any contribution would be appreciated. By choosing one of the above three options you are making an important investment in your child's future. Your child is worth it! Letters of thanks will be sent to those who have already contributed.



## Health & Safety

Please ensure that your child is properly dressed during the winter months and that they bring a healthy lunch in to school. School opens at 8.50 a.m. If possible please arrange that your child is not dropped off outside the school too early before school time. Parents are requested, in so far as possible, to ensure that children who have been unwell, are fully recovered before returning to school. Aside from the obvious health factors, this request

is in line with insurance/ supervision regulations which stand against us accommodating requests from pupils to remain in class during yard breaks. Please follow our One Way Traffic system at school opening & closing times and obey our school Traffic Warden at all times. The Gardaí have been in touch with the school asking us to remind all parents that cars are **not to be parked** inside the yellow box outside the school gates when drop-

ping off or collecting children.

We also ask your co-operation in ensuring that driveways of houses on St. Peter's Tce. are not blocked and that you reduce speed in the area around the school / preschool. We have also been asked by Fairy Hill preschool to remind parents not to drive onto the grassy areas beside Fairy Hill. Thank you for your co operation.





## Extension/Accommodation

With foundation and floor screeding finished work has started on the next phase of the build – the first layers of bricks are being put into place. So far the project is on schedule. The Department has released another tranche of funding which should provide for all bills over the next

few months .

Our own fundraising company (to address hidden costs in the building project) has now raised €30,000 so far. This figure is largely generated through the sale of engraved bricks. The second order of 100 bricks is due to arrive this month. We also hope

that the handmade mosaic will be installed before long.

Planning for our first major fundraising event of 2020 – the Red Ball in the Marine Hotel on Valentine's Night- is continuing. I would like to thank the hardworking committee .



## Extreme Weather Arrangements

Our duty of care towards our pupils, parents, teachers and staff is of paramount importance. With this in mind the following procedures will come into effect in the event of extreme weather at any future time throughout winter/early Spring:

Every effort will be made to clear safe pathways from the main school gate to the entrance doors (Junior & Senior entrances). Pupils, parents and staff are advised to make use of these routes. The school heating system will be regularly checked over weekends/holiday periods during periods of freezing weather in order to minimise the risk of breakdown. On icy mornings/afternoons parents are advised to park cars in the village /harbour /Summit car parks and walk the short distance to the school rather than attempting to drive up the steep side roads at Scoil Mhuire.

During spells of extreme weather we will be happy to accept pupils arriving into school after normal opening time (8.50 a.m.). This allows a parent set out from home at a time when (s)he is satisfied that road conditions have sufficiently improved to allow a safe journey. Roll call will be delayed on these occasions to facilitate latecomers. Parents collecting junior/senior infant pupils at 1.30 p.m. may also, if they wish, collect brothers/sisters in other classes at the same time and so avoid an unnecessary extra journey.

On mornings of extreme weather pupils will be allowed into the school hall or in to their classroom (on Wed. & Fridays when the hall is set up for Violin classes) where they will be supervised until brought to their classroom by their own teacher at normal reception time – please note that this procedure will apply only where exceptional weather conditions dictate and will be at the discretion of the school's Board of Management.

In the interest of health & safety, worsening weather /breakdown of heating system/ disruption to water storage system may make it necessary to close the school. Parents will be informed at the earliest opportunity by one of the following means. Text messaging service / Note in journals/notices on school doors/letters home. Church announcements – where time allows. Parents will also be informed of predicted re-opening dates. Class representatives will contact parents with up to date information where arrangements need to be made.



## Board of Management 2019-2023

The inaugural meeting of the school's Board of Management 2019-2023 took place on December 11th. Board members are Ms. Caroline McEldowney and Mr. Darragh Richardson (Elected Parents), Mr. Joe Kirwin and Rev. Fr. Gerry Tanham (Patron's Nominees), Mr. Ian Sunderland and Mr. John Chambers (School Representatives) Ms. Sile Moloney and Ms.

Nuala McDermott (Community Nominees). At the meeting the following officers were elected:

Chairperson:  
Mr. Joe Kirwin

Treasurer:  
Mr. Darragh Richardson

Secretary to the Board:  
Mr. John Chambers

Recording secretary:  
Ms. Caroline McEldowney

I wish the Board every success in its important governance role over the next four years.

### Board Meeting

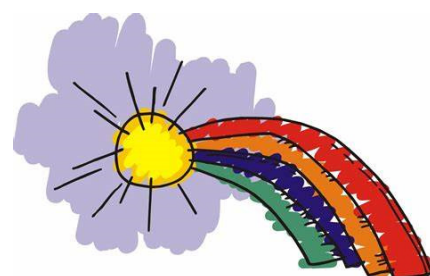


## Rainbows

The Rainbows group for children affected by separation or divorce began on Monday the 11th of November 2019. There are 4 Scoil Mhuire students attending the programme. The facilitators for this group are Ms. Muireann Ridge and Ms. Mary O'Donnell. Ms. Niamh

McHugh is the coordinator.

There are 9 sessions in the programme. It takes place in Ms. Ridge's classroom on a Monday from 14:30 - 15:30. Session will run until Easter.



## Enrolment 2020/2021

Enrolments for 2020/2021 are currently being processed. We wish to remind all parents that even if you already have a child attending this school you need to fill in an enrolment form. The Board of Manage-

ment cannot offer a place to a child if an enrolment application has not been received. I have met with the two other principals with regard to enrolment/accommodation issues and will be meeting them again

next month to discuss common concerns in light of housing development in the area over the next few years - as you know there are a few major housing projects in the pipeline.



Fill out Form

## Forsa Campaign regarding School Secretaries

As you know, a one day strike took place on Friday 10<sup>th</sup> January as part of a campaign by Forsa to address serious inequalities re' terms/ conditions of service affecting school secretaries paid through the DES Ancillary Services Grant. Thank you for your support. From Monday January 13<sup>th</sup> the following services may be affected - ESINET/

On Line Claims System (OLCS), FSSU. Thank you for your ongoing support and patience. You might take advantage of the current political opportunity (a looming general election) to bring your concerns regarding this matter to the attention of your local politicians and to discuss our recent reduction of SNA allocation before Christmas (from 6.16 SNA posts to 4.33 posts).

## Congratulations

*Congratulations and best wishes to teacher Ms. Siobhan Breen and John McKee who announced their engagement over the Christmas Holidays.*



## Condolences

Our school community was saddened and shocked by the untimely death of teacher Ms. Roisin Slattery's sister Catherine who died days after giving birth to a baby boy a

week before Christmas.. Roisin and her family are with us in our thoughts and prayers.

Our sympathy is also extended to teacher Ms. Ciara Fitzpatrick and Special Needs Assistant Ann

McCarthy who lost their father in lay/mother in law respectively over the holiday period.

Our sympathy also goes to Ms. Emma Maher whose aunt passed away earlier this month.

## School Events—Recent/Current/Ongoing

Jan 6 <sup>th</sup>	Teaching Staff attended in-service training day on the new Primary Language Curriculum
Jan 8 <sup>th</sup>	Build a Brick fundraising meeting at 7.30p.m.
Jan 10 <sup>th</sup>	Forsa One Day Strike on behalf of school secretaries to address
Jan 14 <sup>th</sup>	HSE School Vaccinations
Jan 14 <sup>th</sup>	School Assemblies
Jan 16 <sup>th</sup>	Meeting of the Teaching Staff (after school)
Jan 20 <sup>th</sup> -24 <sup>th</sup>	Well Being Week 2020. Details of activities/events later.
Jan 23 <sup>rd</sup> /24 <sup>th</sup>	Principal attends Irish Primary Principals Network annual conference
Jan 25 <sup>th</sup>	Deanery Assessment morning  (6 <sup>th</sup> class pupils)
Jan 27 <sup>th</sup> -31 <sup>st</sup>	Catholic Schools Week 2020
Jan 27 <sup>th</sup>	Board of Management meeting

### Ongoing:

School Assemblies	Music Makes Magic	Violin Classes & Orchestras	Athletics	Bug Busting Checks	
Irish Club	After School Club	Maths Club	Chess	Guitar	Crafts & Cookery
STEAM	Hip Hop Dance	Irish Dancing	Singing	GAA Fitness Training	



## Calendar January–June 2020

Thursday	16 <sup>th</sup> January	Meeting of the Teaching Staff	Normal closing times
Thursday	13 <sup>th</sup> February	Whole Staff Meeting	Normal closing times
<b>Monday – Friday</b>	<b>17<sup>th</sup> - Feb 21<sup>st</sup> Feb }</b>	<b>Mid-term Break</b>	<b>School Closed</b>
Monday Tuesday	16 <sup>th</sup> March 17 <sup>th</sup> March }	School Holiday St. Patrick's Day	School Closed
Thursday	26 <sup>th</sup> March	Meeting of the Teaching Staff	School closes at 1.30 p.m.
<b>Monday – Friday</b>	<b>6<sup>th</sup> April 17<sup>th</sup> April }</b>	<b>Easter Holidays</b>	<b>School Closed</b>
Monday	4 <sup>th</sup> May	Public Holiday	School Closed
Saturday	9 <sup>th</sup> May	First Holy Communion	11.00 a.m.
Thursday	14 <sup>th</sup> May	Meeting of the Teaching Staff	Normal closing times
Mon –Fri	11 <sup>th</sup> –15 <sup>th</sup> May	Standardised Testing Week	
Friday	22 <sup>nd</sup> May	Confirmation	11.00 a.m.
Friday –	29 <sup>th</sup> May }	School Holiday	School Closed
Thursday	11 <sup>th</sup> June	Meeting of the Teaching Staff	School Closes at 1.30p.m.
Friday	19 <sup>th</sup> June	School Sports Day	
<b>Tuesday</b>	<b>30<sup>th</sup> June</b>	<b>Summer Holidays</b>	<b>School closes at 12 noon</b>

PLEASE NOTE:                      MIDTERM BREAK

MONDAY 17th – FRIDAY 21st FEBRUARY–SCHOOL CLOSED